



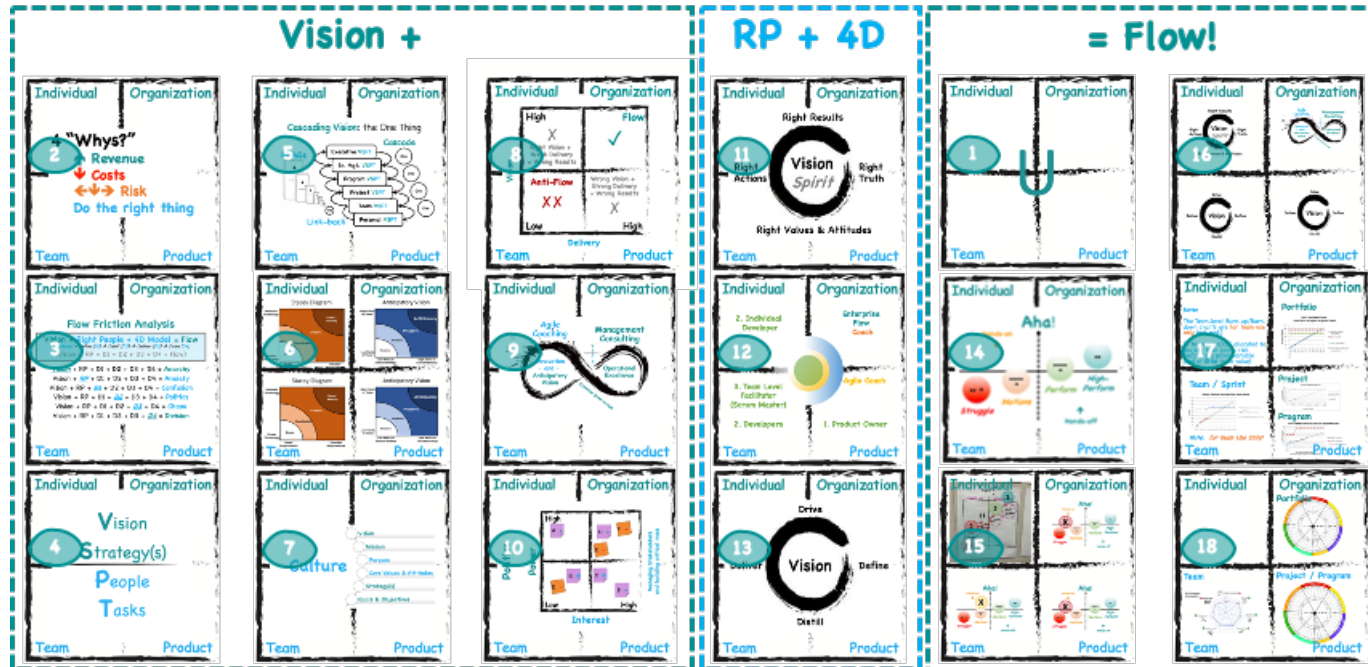
Flow Leadership Framework

Flow in a Nutshell
Printable version





Vision + RP + 4D = **Flow** (& success!)



Print Version

Flow in a Nutshell

Leadership take-aways...

- Print these Flow-in-a-nutshell slides (4 thru 7) out on, at minimum, 11x17 paper and put them up on your wall in your:
 - ✓ Office, cubicle, desk area
 - ✓ Team room
 - ✓ Executive's Office!

Flow Leadership in a Nutshell



Vision
+ Right People
+ the 4D Model
= Flow (Success)

Flow Friction Analysis

Vision + Right People + 4D Model = Flow

4D Model = Define (D1) → Distill (D2) → Deliver (D3) → Drive (D4)

(Vision + RP + D1 + D2 + D3 + D4 = Flow)

~~Vision~~ + RP + D1 + D2 + D3 + D4 = **Anarchy**

Vision + ~~RP~~ + D1 + D2 + D3 + D4 = **Anxiety**

Vision + RP + ~~D1~~ + D2 + D3 + D4 = **Confusion**

Vision + RP + D1 + ~~D2~~ + D3 + D4 = **Politics**

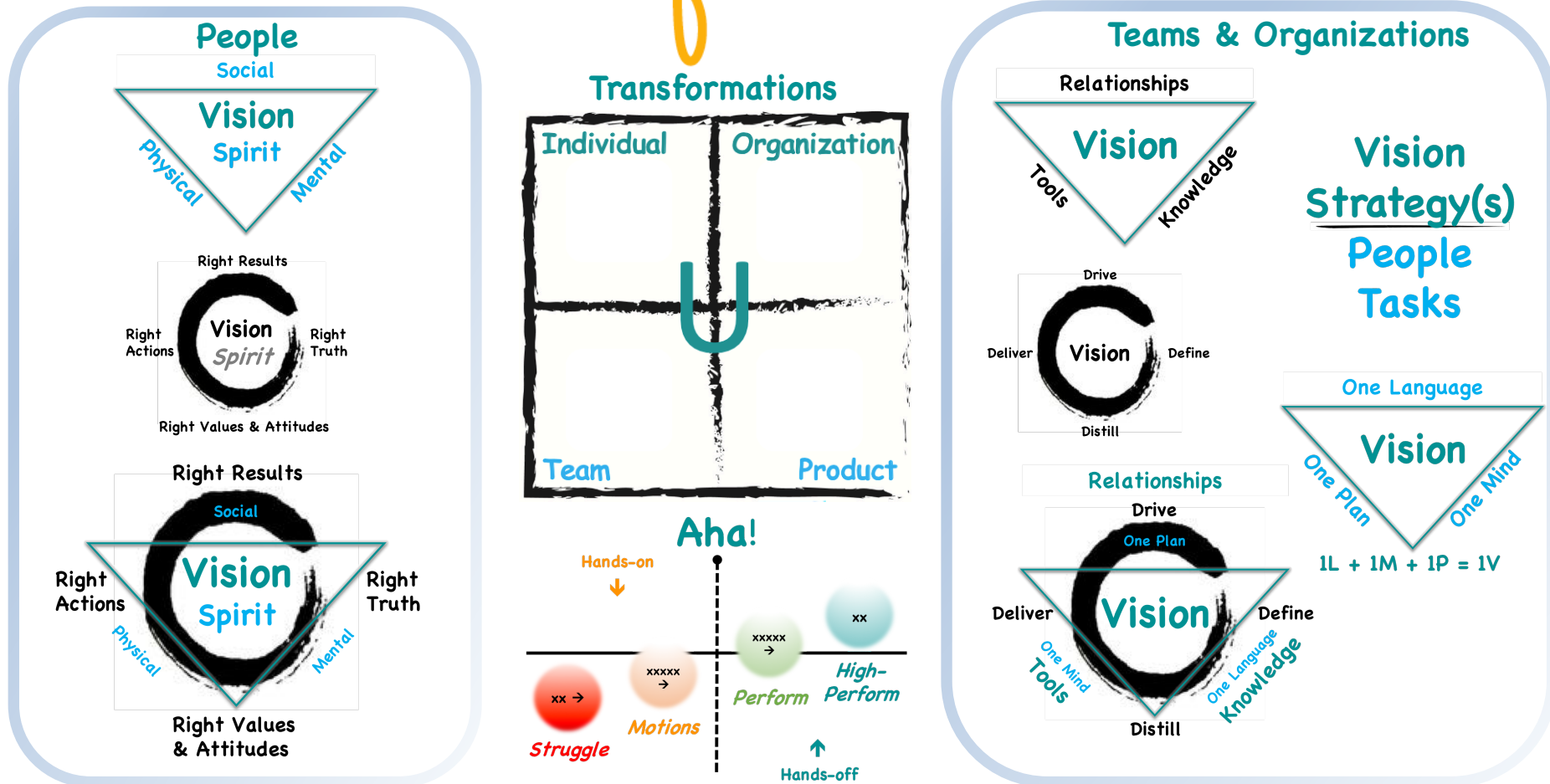
Vision + RP + D1 + D2 + ~~D3~~ + D4 = **Chaos**

Vision + RP + D1 + D2 + D3 + ~~D4~~ = **Division**

Flow Leadership Framework

Flow Leadership in a Nutshell

flow®

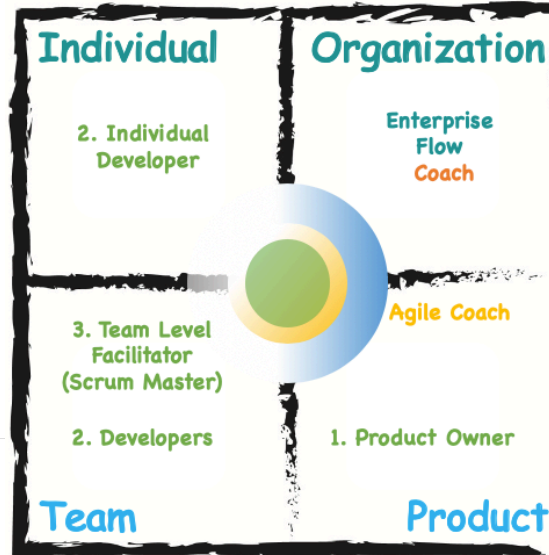
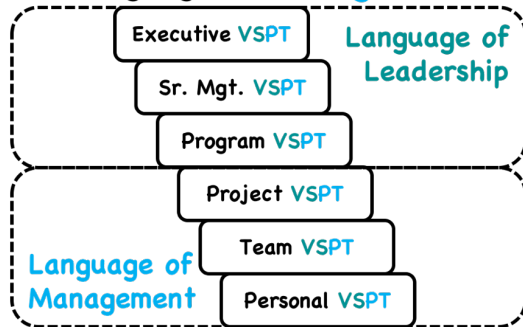


Flow Leadership Framework

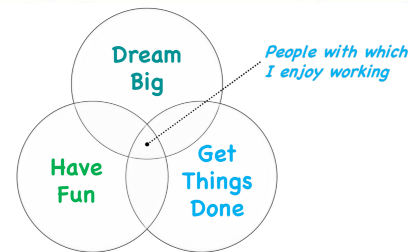
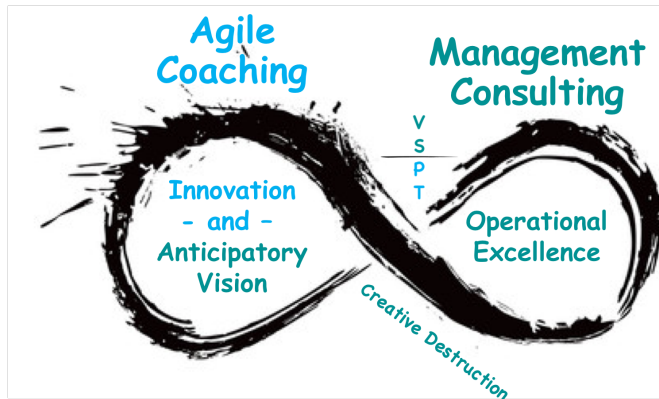
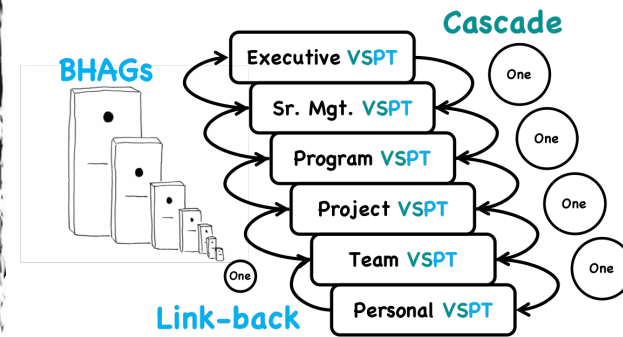
Flow Leadership in a Nutshell

flow®

Language of **Leadership** vs.
Language of **Management**



Cascading Vision: the One Thing



Culture

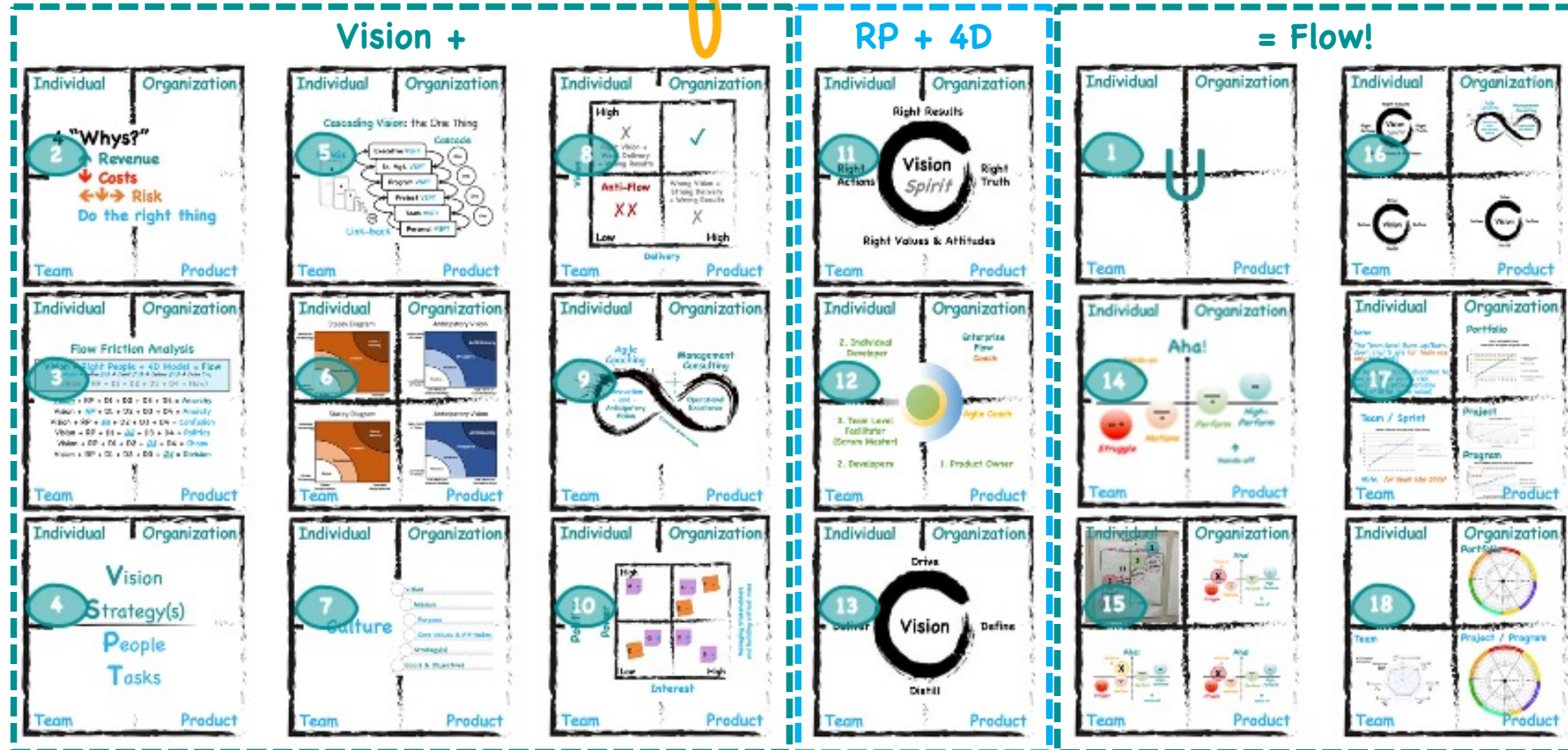


Flow Leadership Framework

Flow Leadership in a Nutshell

Vision + RP + 4D = Flow!

flow®



Flow Leadership Framework

Leadership Recap & Application

Recap

- Print these Flow-in-a-nutshell slides out on (at minimum) 11x17 paper and put them up on your wall in your:
 - ✓ Office, cubicle, desk area
 - ✓ Team room
 - ✓ Executive's Office!

Application

- Think about how to make things in your workspace:
 - ✓ Big and Visible
- Use the “nutshells” for conversations with your team members and stakeholders

Thank You!



Andrew P. Kallman

FCT, FCC, FCP, MBA, PMP®, AHF, CSP-SM, CSM, SA

www.andrewkallman.com

andrew@andrewkallman.com

<https://www.linkedin.com/in/andrewkallman/>